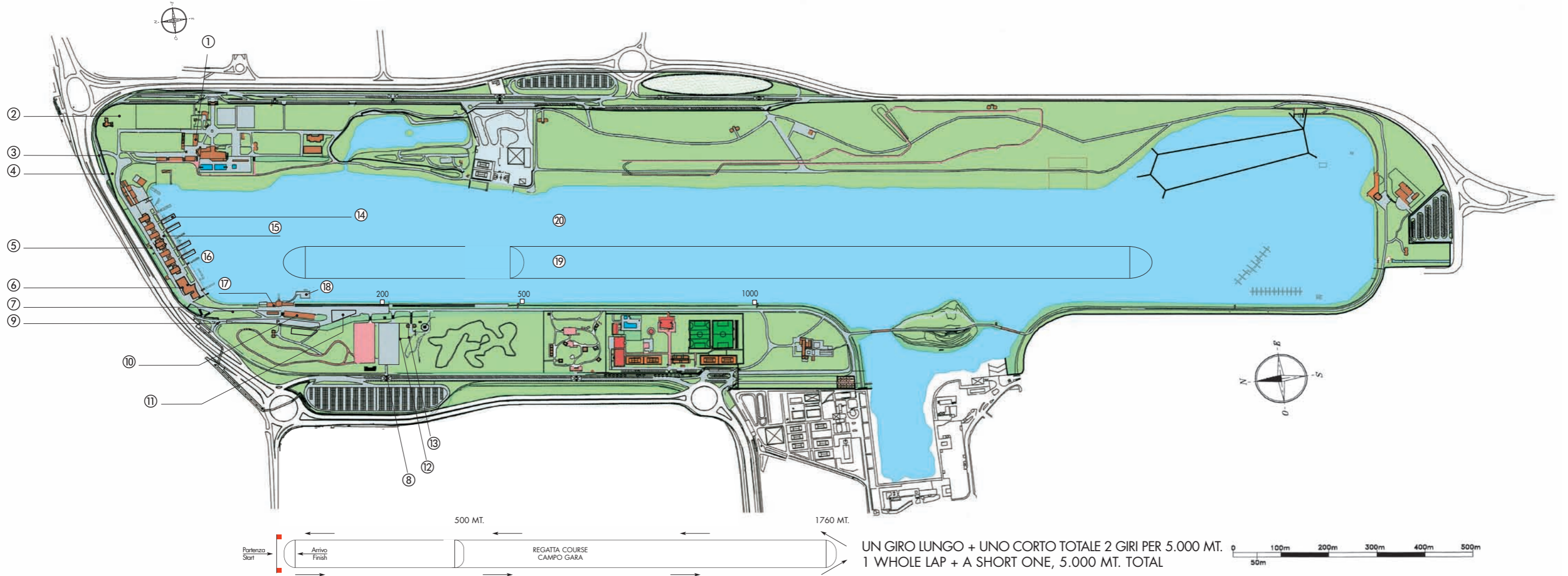


Campo di gara
The regatta course



UN GIRO LUNGO + UNO CORTO TOTALE 2 GIRI PER 5.000 MT.
1 WHOLE LAP + A SHORT ONE, 5.000 MT. TOTAL

Il campo di gara

- 1 Catering
- 2 Parcheggio carrelli porta-barche
- 3 Ingresso veicoli squadre partecipanti
- 4 Parcheggio pulmini società
- 5 Parcheggio pulmini società
- 6 Idroscalo Club - Spogliatoi - Docce - Servizi - Segreteria - Zona alaggi
- 7 Area espositiva
- 8 Ingresso camping
- 9 Ingresso e parcheggio Staff - Dirigenti - Autorità - Camping - Sponsors - Giornalisti
- 10 Tribune e Sala stampa
- 11 Area espositiva
- 12 Parcheggio camping
- 13 Camping
- 14 Pontile imbarco e sbarco dragon boat e polinesiana-outrigger
- 15 Tralicci porta-barche
- 16 Pontile imbarco e sbarco kayak e canadese
- 17 Peso barche - Doping test - Giuria - Segreteria gare
- 18 Premiazioni
- 19 Campo gara
- 20 Area riscaldamento

The regatta course

- 1 Catering
- 2 Boat trolleys parking
- 3 Teams vehicles entrance
- 4 Teams bus parking
- 5 Teams bus parking
- 6 Idroscalo Club - Dressing-rooms - Showers - Toilets - Secretariat - Embark/disembark area
- 7 Exhibition area
- 8 Camping entrance
- 9 Entrance and parking for Staff - Management - Authorities - Camping - Sponsors - Journalists
- 10 Tribunes and Press room
- 11 Exhibition area
- 12 Camping parking
- 13 Camping
- 14 Dragon boat and polinesyan-outrigger embark/disembark pier
- 15 Boat racks
- 16 Kayak and canadian embark/disembark piers
- 17 Boat weight control - Doping test - Jury - Competition Secretariat
- 18 Prize giving area
- 19 Regatta course
- 20 Warm-up area